

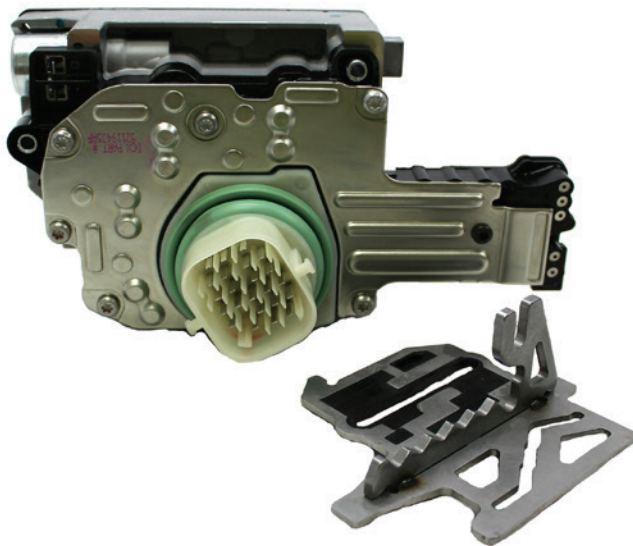
NEW PRODUCT



## Solenoid Block Chrysler 45RFE, 545RFE

Bulletin No. 916-16

<b>GFX Number</b>	208501DK
<b>Application</b>	Chrysler 45RFE, 545RFE
<b>Description</b>	Solenoid Block with White Plug & Detent Plate
<b>Years</b>	2004 - On
<b>Industry Number</b>	N/A
<b>OEM Number</b>	N/A
<b>Availability</b>	In-stock, ready to ship



### LOOKING FOR MORE OEM PARTS?

GFX is a Miami based distributor and manufacturer of Standard Clutch Release Bearings, Automatic Transmission Steel Plates and Automatic Transmission Hard Parts. GFX has over 50 years experience in the Transmission aftermarket industry. Please read the "About Us" section for more details.

We realize you have a choice of suppliers in the industry, so GFX strives to stand out from the rest. We offer competitive prices, same day shipping and no talking to voicemails, we ALWAYS answer the phone !

Experience what the transmission aftermarket business has lost-- Great Service, Great Prices and a company that listens to their customer's needs. We invite you to look through our website and give us a call Monday-Friday 9:00am -5:30pm.

**YOUR DRIVETRAIN CONNECTION SINCE 1961**

CONNECT WITH US @



**GFX CORPORATION**  
4810 NW 74 Ave  
Miami, Florida 33166 U.S.A.

T (305) 499 -9789  
F (305) 499- 9670  
[www.gfxcorp.com](http://www.gfxcorp.com)

IMPORTANT NOTICE: GFX Corp. reserves the right to make changes to, or discontinue any product or price identified in this publication without notice. GFX advises customers to ensure they have obtained the latest and most current version of any relevant information before placing any orders.