

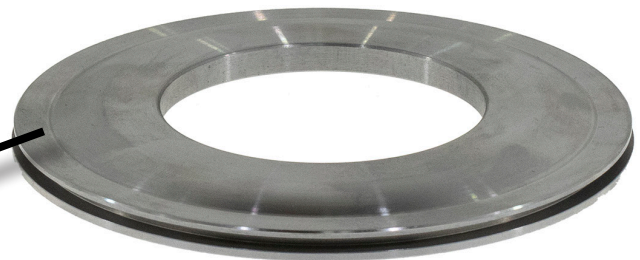
NEW PRODUCT



## UPPER PRIMARY PISTON JATCO/NISSAN JF015E/RE0F11A

Bulletin No. 0519-01

<b>GFX Number</b>	JF015E-PISTON
<b>Application</b>	JF015E/RE0F11A
<b>Description</b>	CNC machined billet steel replacement upper primary piston
<b>Years</b>	2012-16 Nissan Versa 2013-16 Nissan Sentra



Slipping pulleys, with or without codes, get worse when hot. This is likely due to upper primary pulley ID piston damage. The upper primary piston's inner seal is press-fit onto the shoulder of the pulley sheave. A worn or loose fitting piston leaks primary pulley-pressure, causing the belt to slip.

**YOUR DRIVETRAIN CONNECTION SINCE 1961**

CONNECT WITH US @



**GFX CORPORATION**  
4810 NW 74 Ave  
Miami, Florida 33166 U.S.A.

T (305) 499 -9789  
F (305) 499- 9670  
[www.gfxcorp.com](http://www.gfxcorp.com)

IMPORTANT NOTICE: GFX Corp. reserves the right to make changes or discontinue any product or price identified in this publication without notice. GFX advises customers to ensure they have obtained the latest and most current version of any relevant information before placing any orders.